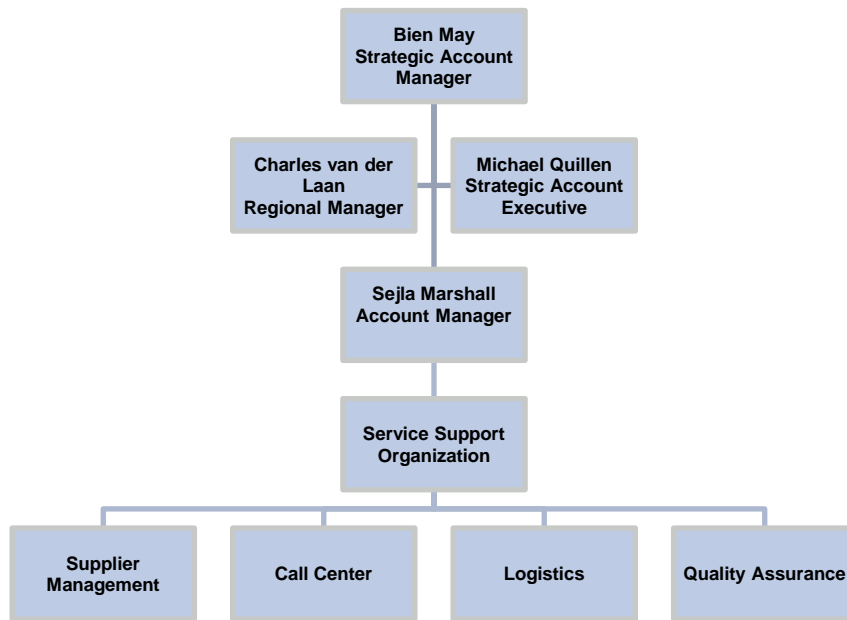


# Introducing your Thermo Fisher Scientific Team



- **On-Site Manager and Account Manager**
  - Dedicated management of daily operations for University of Kentucky
    - Conducts and manages Business Reviews Meetings
    - Maintains asset inventory
    - Manages site supplier relationships and overall program operations
    - Communicates and educates site
  - Responsible for overall program success
- **Strategic Account Executive**
  - Supports relationship with University of Kentucky management
    - Recommends continuous improvement opportunities and Lifecycle enhancements

# Program Overview- CAMp II Features

## ▪ Basic Program Features:

- One single contract
- Uniform ending dates for all participating assets regardless of when it's added to the program
- Includes a full time Site Team located at UK to manage and support the program
- Includes corrective and preventative maintenance repairs
- Includes parts, labor and travel expenses
- Includes overtime, weekend and holiday differential costs for labor and travel (per entitlements)
- Includes miscellaneous glassware (monitors, flat panels, LED display lights)
- Includes in-house labor reimbursement
- Includes a share-back incentive

## ▪ Customized Program Features:

- **New: Preventive Maintenance Scheduling and Call Center Dispatch**
- Includes a Direct Vendor Payment Feature
- Includes consumables/expendable parts installed by a service technician
- Laser tubes included (per entitlements)