



**University Enrollment  
Meeting**  
*Graduate Enrollment*

**Jeannine Blackwell, Dean**  
**September 9, 2004**



# Fall 2004 Enrollment

*(close of registration on August 31st)*

**Fall 2004      Fall 2003      Fall 2002**

**Graduate**                      6073                      6100                      5977

**Professional**                      73                      63

**Doctorate**

(Nursing, Public Health)

<b>Total:</b> 6146                      6163
--



## Fall 2004 Enrollment

*(close of registration on August 31st)*

	Fall 2004	Fall 2003	Fall 2002
Doctoral	2102	2140	2078
Masters	3081	3068	2987
Specialist	46	60	51
Certification	44	52	71
Post-Bac	523	534	545
Visiting	14	18	13
Post-Doc	263	228	232

<b>TOTAL</b>	<b>6073</b>	<b>6100</b>	<b>5977</b>
--------------	-------------	-------------	-------------



## Fall 2004 Enrollment

*(close of registration on August 31st)*

	2004	2003	2002	2001	2000	1999
Doctoral	2102	2140	2078	1896	1839	1828
Masters	3081	3068	2987	2600	2394	2431
Specialist	46	60	51	53	61	42
Certification	44	52	71	69	62	77
Post-Bac	523	534	545	688	441	552
Visiting	14	18	13	34	13	28
Post-Doc	263	228	232	232	244	210
<b>TOTAL</b>	<b>6073</b>	<b>6100</b>	<b>5977</b>	<b>5572</b>	<b>5054</b>	<b>5168</b>



## Fall 2004 Enrollment

### *Newly-Enrolled*

	Fall 2004	Fall 2003	Fall 2002
Doctoral	280	359	367
Masters	888	927	991
Specialist	5	11	16
Post-Bac	253	298	251



## Fall 2004 Applications

**Total Applications = 7046**

*(Compare to 9327 for Fall 2003)*

*(Compare to 9695 for Fall 2002)*

**Completed = 5432**

*(Compare to 6664 for Fall 2003)*

*(Compare to 6544 for Fall 2002)*

*4184 applications (59%) were submitted*

*directly via the Internet*



# Fall 2004 Applications

	<b>Applications (complete)</b>	<b>Admitted</b>	<b>Newly- Enrolled</b>
Doctoral	1821	712	280
Masters/ Specialist	2868	1538	893



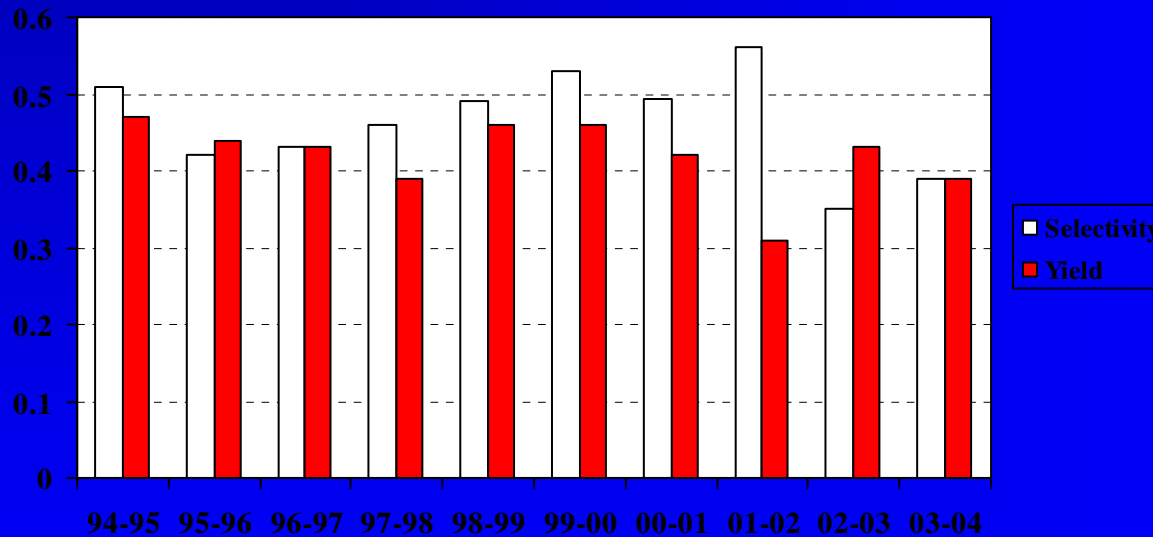
# Fall 2004 Applications

	Apps. (comp.)	Admitted	Newly- Enrolled	Selectivity	Yield
Doctoral	1821	712	280	<b>0.39</b>	<b>0.39</b>
Masters/ Specialist	2868	1538	893	<b>0.54</b>	<b>0.58</b>



# Graduate Applications: Selectivity & Yield

## Doctoral



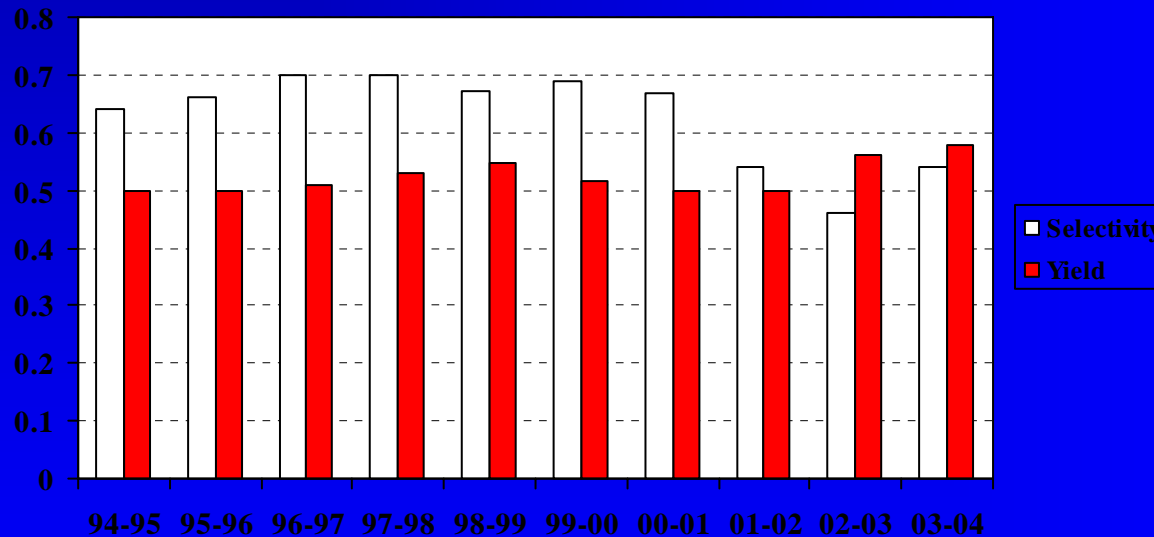
**Fall 2004**

**Selectivity = 0.39   Yield = 0.39**



# Graduate Applications: Selectivity & Yield

## Master's/Specialist



**Fall 2004**

**Selectivity = 0.54 Yield = 0.58**



# Fall 2004 Graduate Enrollment

## Kentucky Resident

Fall 2004

3592

Fall 2003

3670

Fall 2002

3634

Fall 2001

3538



# Fall 2004 Graduate Enrollment

## African American

	Fall 2004	Fall 2003	Fall 2002	Fall 2000
<b>Total</b>	300	315	308	242
<b>KY Resident</b>	212	236	225	165

*\*6.0% of total KY Resident enrollment*



# Fall 2004 Graduate Enrollment

## International Students

Fall 2004

1316

Fall 2003

1272

Fall 2002

1252

Fall 2001

1077



# Fall 2004 Enrollment by College

	Doctoral Fall 2004	Doctoral Fall 2003	Masters Fall 2004	Masters Fall 2003
Agriculture	156	163	174	204
Architecture	*	*		52
A & S	707	699	266	275
Bus. & Econ.	96	110	271	283



# Fall 2004 Enrollment by College

	Doctoral Fall 2004	Doctoral Fall 2003	Masters Fall 2004	Masters Fall 2003
Commun.	38	56	274	264
Dentistry	*	*	15	17
Design	*	*	61	*
Education	319	333	515	559
Engineering	250	257	410	398



# Fall 2004 Enrollment by College

	Doctoral Fall 2004	Doctoral Fall 2003	Masters Fall 2004	Masters Fall 2003
Fine Arts	60	74	80	78
Grad. School	109	140	225	219
Health Sci.	26	23	279	242
Medicine	168	157	11	108 *

\* Included Masters of Public Health



# Fall 2004 Enrollment by College

	Doctoral Fall 2004	Doctoral Fall 2003	Masters Fall 2004	Masters Fall 2003
Nursing	54	49	128	127
Pharmacy	58	57	0	0
Public Health	40	*	102	*
Social Work	21	22	269	302

\* College created AY 03-04



# Highlights

## •Graduate School Highlights

Over 6000 enrolled in Graduate School for second year in a row

Over 3000 in Master's programs for second year in a row.

15% Increase in Postdoctoral scholars, a strategic indicator

59% of all applications via the internet, up from 47% last year

## •Increases in doctoral enrollment in the medical colleges: up 20 from previous year.

Medicine, Nursing, Health Sciences, Pharmacy, Public Health.

## •New Colleges

New College of Public Health with 40 doctoral students, including Gerontology

New College of Design with 61 masters students

## •Selectivity maintained

Drop in number of applications, but

Selectivity (the proportion admitted of those who applied) continued to be LOW

Yield (proportion of those admitted who came) continued to be HIGH

Doctoral : 39% selectivity. 39% yield

Masters: 54% selectivity, 58% yield

## •Nationally and internationally competitive programs:

non-Kentucky national and international students comprised 41% of all graduate students

Nationally, international student numbers decreased; our numbers increased by 3.5%.



# Assessment Office

Prepared by:

Christy Jacks

Institutional Assessment Analyst

Graduate School