

# PLANT PATHOLOGY

# 2002-2003

## Graduate Enrollment:

	Doctoral	Masters	Post-Doc
Total	14	3	9
Gender: Male	8	0	6
Female	6	3	3
Newly-Enrolled	2	2	1
Male	1	0	0
Female	1	2	1
Minority: Total	0	1	0
Black	0	1	0
Citizenship: KY	3	3	0
International	9	0	9

## Degrees Awarded:

	Doctoral	Masters
Total	1	1
Gender: Male	1	0
Female	0	1
Minority: Total	0	0
Black	0	0
Citizenship: KY	1	0
International	0	1

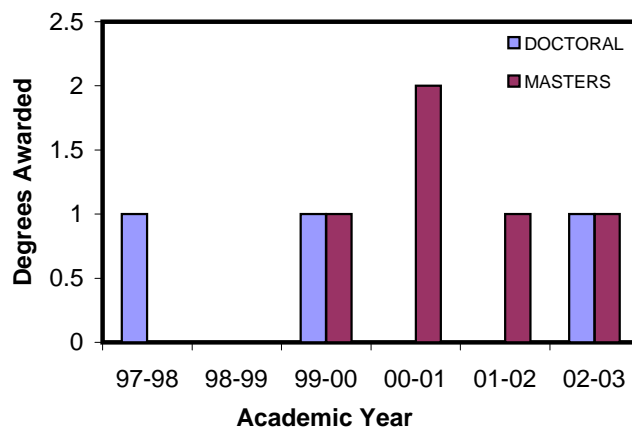
## Assistantships & Fellowships:

	Fall 2002	Spring 2003
Teaching Asst.	0	0
TA Stipend		\$0
Research Asst.	18	16
RA Stipend		\$121,866
Graduate Asst.	0	0
GA Stipend		\$0
Fellowships	9	8
Fellow. Stipend		\$117,203
Total Stipend		\$239,069

## Applications:

	Doctoral	Masters
Received	23	12
Completed	10	11
Admitted	2	3
Gender: Male	15	7
Female	8	5
Minority: Total	0	1
Black	0	1
Citizenship: KY	0	5
International	23	5

## 1997-1998 to 2002-2003 Degrees Awarded:



## Tuition Scholarships:

Total Tuition Scholarships:	\$101,720	
	Fall 2002	Spring 2003
TORA Awards	4	4
Dean's RA Awards		
KGS Awards		

## Graduate School Support:

Form of Support	No.	Amount
Dissertation Enhancement Award		
Commonwealth Research Award		
Student Support	6	\$2,400
Visiting Distinguished Faculty		
Commonwealth Incentive Award		